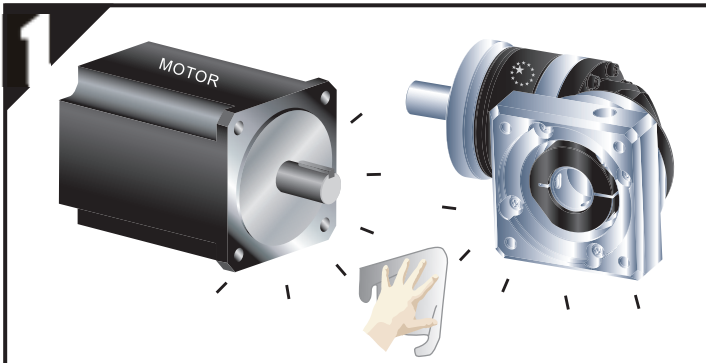
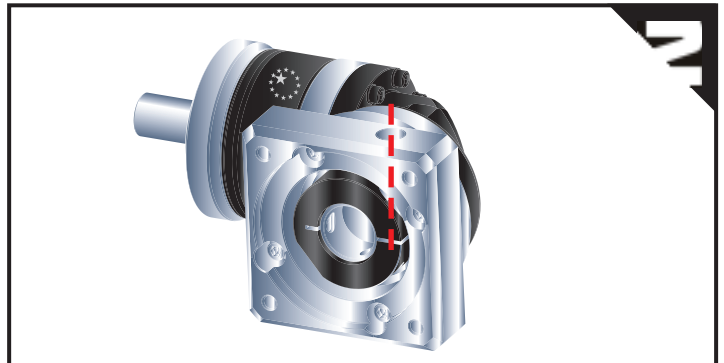




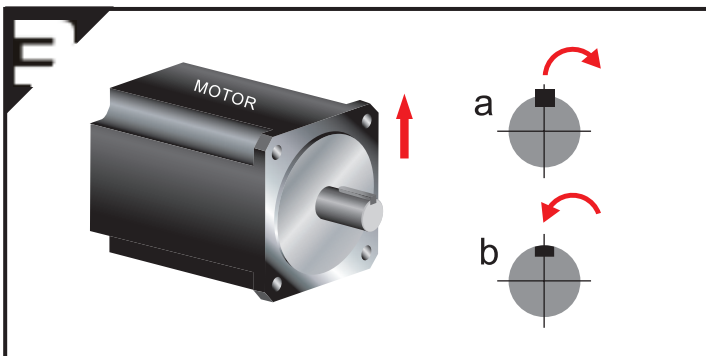
MOUNTING INSTRUCTION (PIR series)



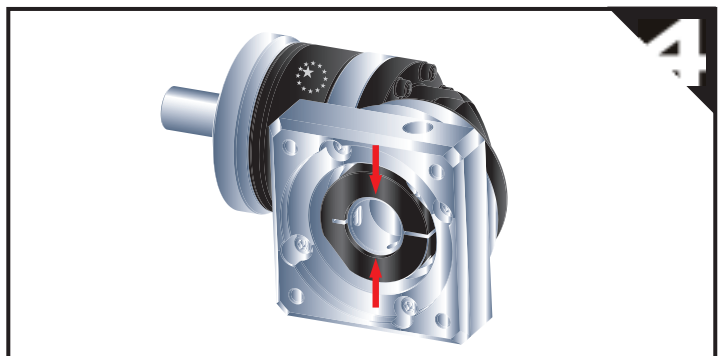
Double-check the motor and gearbox size. Clean the mounting surfaces.



Rotate the set collar until the bolt hole is aligned with access hole.

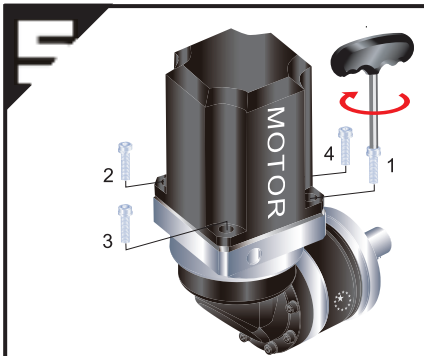


a. Remove motor key, if necessary.
b. Insert balance key, if necessary.

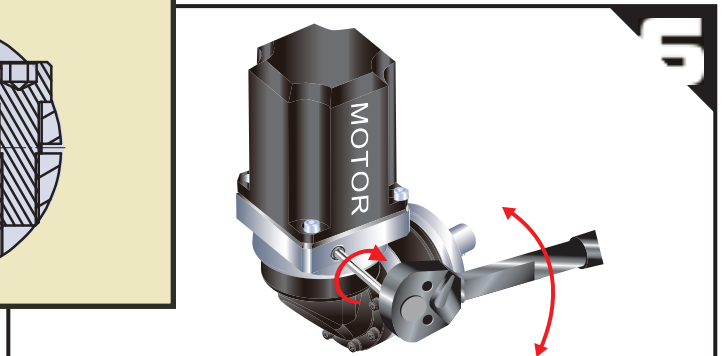


Check motor shaft size. (If necessary, please insert bush)

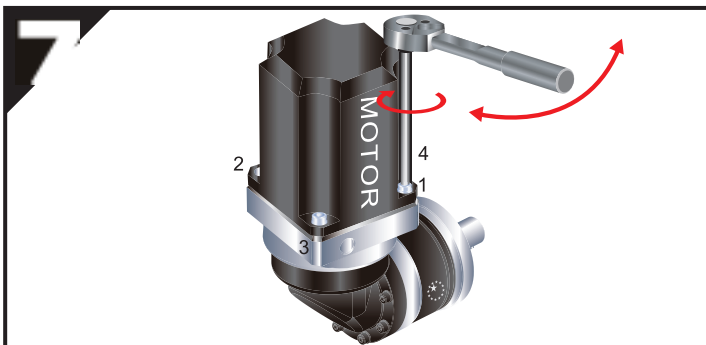
Correct installation.
When installing on keyed or flatted shafts, please refer to figure below.



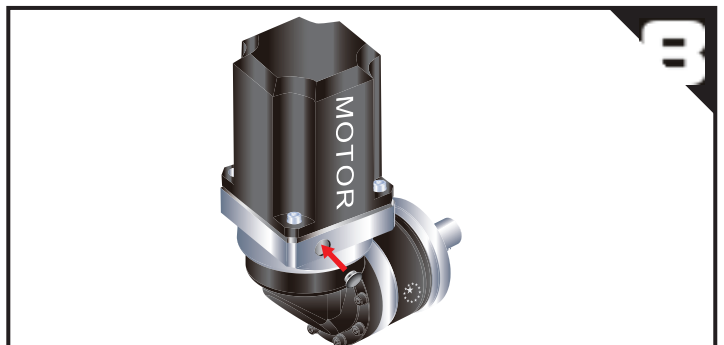
Set at vertical position. Tighten the mounting bolts (including washer) in 1~4 order with wrench to 5% specified torque. (See Table 1)



Tighten the set collar bolt with torque wrench to specified torque. (See Table 2)



Tighten the mounting bolts in 1~4 order with torque wrench to specified torque (See Table1)



Insert the plug

Table 1 Tightening Torque Recommended for Motor Mounting Bolt

Bolt Size	Width Across Flats	Strength 8.8 Tightening Torque		Strength 10.9 Tightening Torque		Strength 12.9 Tightening Torque	
	[mm]	[Nm]	[In-lbs]	[Nm]	[In-lbs]	[Nm]	[In-lbs]
M3 x 0.5P	2.5	1.3	12	1.8	16	2.1	19
M4 x 0.7P	3	3	27	4.1	37	4.9	44
M5 x 0.8P	4	6.1	55	8.2	73	9.8	87
M6 x 1P	5	11	98	14	124	17	151
M8 x 1.25P	6	25	222	34	302	41	364
M10 x 1.5P	8	49	434	67	594	80	709
M12 x 1.75P	10	85	753	116	1028	139	1232
M14 x 2P	12	137	1214	186	1648	223	1976
M16 x 2P	14	210	1860	286	2534	343	3038

Table 2 Tightening Torque Recommended for Set Collar Bolt

Gearbox Size	Motor Shaft Dia.	Bolt Size	Width Across Flats	Tightening Torque	
	[mm]	[mm]	[mm]	[Nm]	[In-lbs]
PE II R050 PA II R042 PG II R040 PN II R017 PS II RA	C3 ≤ 8	M5 x 0.8P x 16L	4	9.8	87
	C3 ≤ 11	M5 x 0.8P x 16L	4	9.8	87
	C3 ≤ 14	M5 x 0.8P x 16L	4	9.8	87
PE II R070 PA II R060 PG II R060 PN II R023 PS II RB	C3 ≤ 8	M5 x 0.8P x 16L	4	9.8	87
	C3 ≤ 11	M5 x 0.8P x 16L	4	9.8	87
	C3 ≤ 14	M5 x 0.8P x 16L	4	9.8	87
	C3 ≤ 19	M8 x 1.25P x 25L	6	41	364
PE II R090 PA II R090 PG II R080 PN II R034 PS II RC	C3 ≤ 14	M5 x 0.8P x 16L	4	9.8	87
	C3 ≤ 19	M8 x 1.25P x 25L	6	41	364
	C3 ≤ 24	M8 x 1.25P x 25L	6	41	364
	C3 ≤ 28	M8 x 1.25P x 25L	6	41	364
PE II R120 PA II R115 PG II R120 PN II R042 PS II RD	C3 ≤ 19	M8 x 1.25P x 25L	6	41	364
	C3 ≤ 24	M8 x 1.25P x 25L	6	41	364
	C3 ≤ 28	M8 x 1.25P x 25L	6	41	364
	C3 ≤ 32	M10 x 1.5P x 30L	8	80	709
	C3 ≤ 35	M10 x 1.5P x 30L	8	80	709
	C3 ≤ 38	M10 x 1.5P x 30L	8	80	709
PE II R155 PA II R142 PG II R160 PN II R056 PS II RE	C3 ≤ 19	M8 x 1.25P x 25L	6	41	364
	C3 ≤ 24	M8 x 1.25P x 25L	6	41	364
	C3 ≤ 28	M8 x 1.25P x 25L	6	41	364
	C3 ≤ 32	M10 x 1.5P x 30L	8	80	709
	C3 ≤ 35	M10 x 1.5P x 30L	8	80	709
	C3 ≤ 38	M10 x 1.5P x 30L	8	80	709
	C3 ≤ 42	M12 x 1.75P x 35L	10	139	1232

Note: Tightening Torque values can be exceeded by 20% for increased clamping force.



APEX DYNAMICS, INC.

Tel : 886-4-24650219 / Fax : 886-4-24650118

E-Mail : sales@apexdyna.com / Web : www.apexdyna.com

NO. 10, Keyuan 3rd Rd., Situn District, Taichung City 40763, Taiwan(R.O.C)