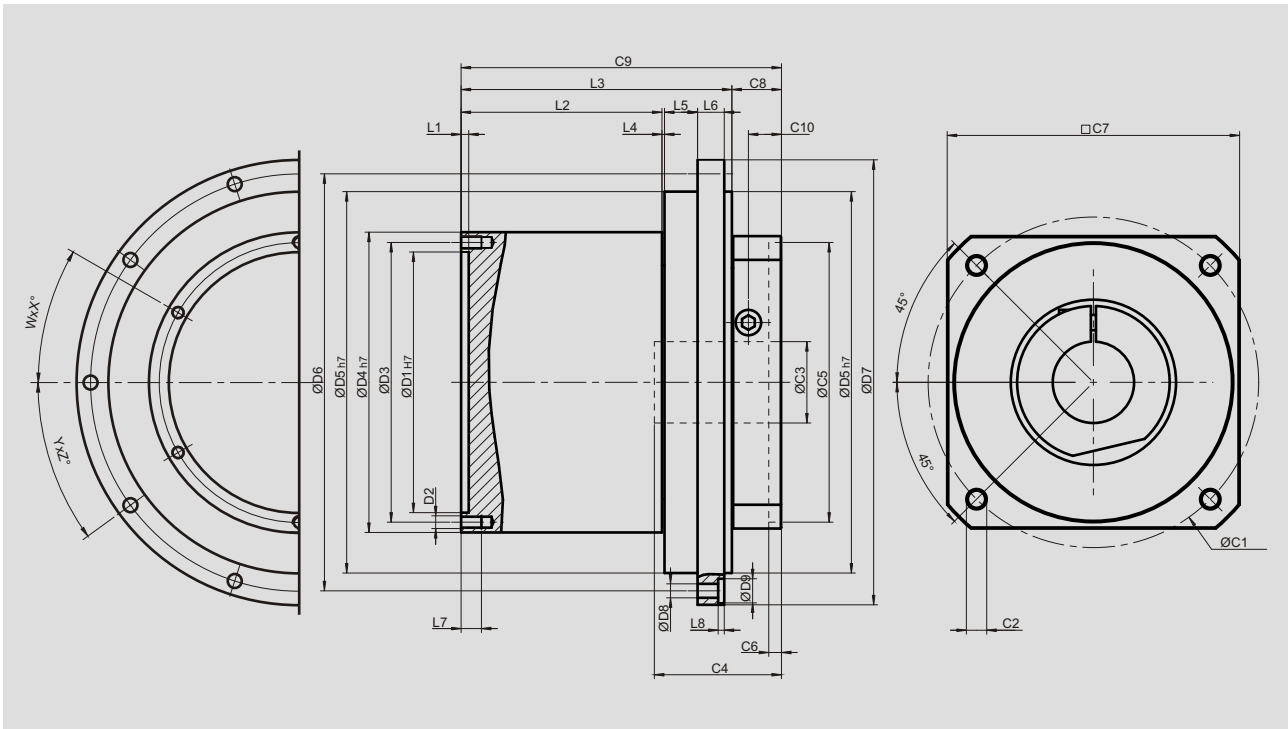


# Dimensions (1-stage, Ratio i=2~9)



[unit: mm]

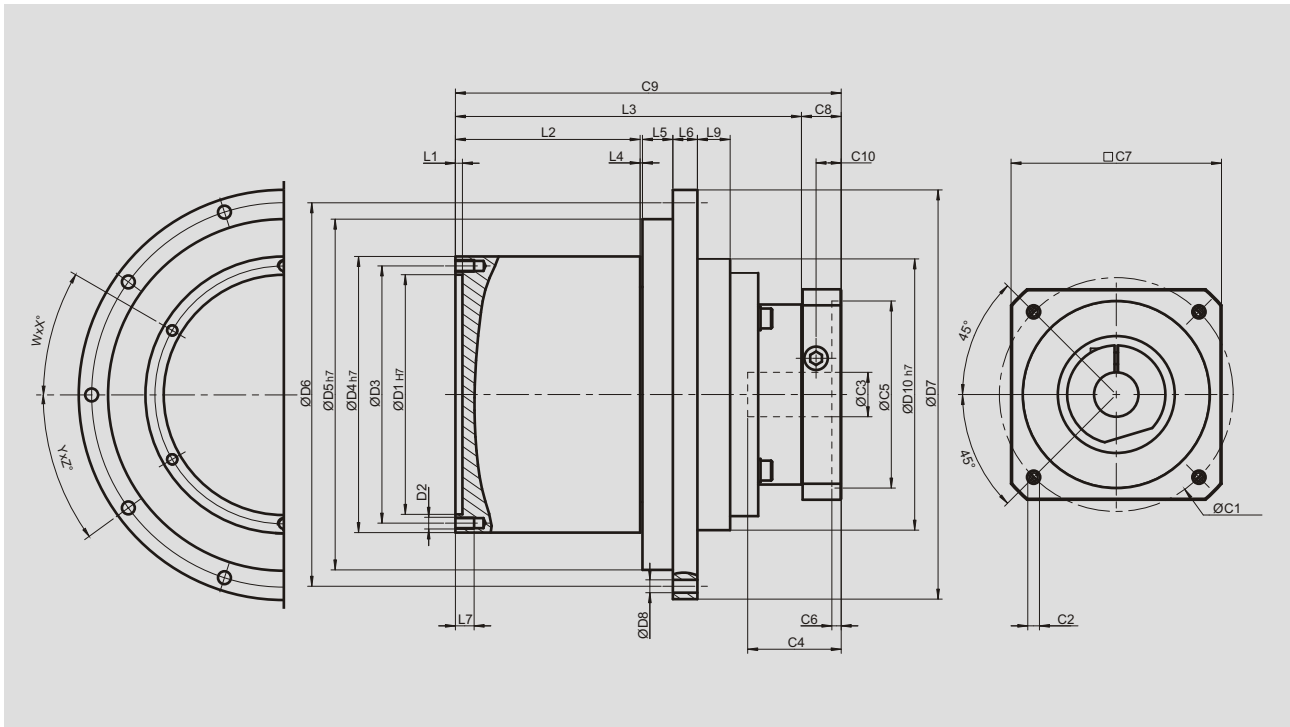
Dimension	AL070	AL095	AL110	AL150	AL190	AL230	AL280
D1 <sub>H7</sub>	37.5	55.5	70.5	102.5	132.5	168.5	204.5
D2	M3 x 0.5P	M3 x 0.5P	M4 x 0.7P	M5 x 0.8P	M5 x 0.8P	M6 x 1P	M6 x 1P
D3	42	61.5	78.5	110	142.5	179	216
D4 <sub>H7</sub>	47.7	67.3	87.3	118.1	152.8	190	229.2
D5 <sub>H7</sub>	70	95	110	150	190	230	280
D6	80	108	124	164	208	246	296
D7	90	120	135	175	225	262	312
D8	4.5	5.5	5.5	5.5	9	9	9
D9	8	9.5	--	9.5	14	--	--
L1	3	3	3	3	4	3	3
L2	36	55.5	60.5	79	94	115	116
L3	50.5	72	84	106.5	124.5	162	169
L4	0.5	0.5	0.5	1	1	1.5	1.5
L5	6	7	10	13	15	18	22
L6	6	7	7.5	10.5	12	15	18
L7	6	6	8	9	9	11	11
L8	2.4	3.4	--	2.4	6.1	--	--
C1 <sup>4</sup>	46	70	100	130	165	215	235
C2 <sup>4</sup>	M4 x 0.7P	M5 x 0.8P	M6 x 1P	M8 x 1.25P	M10 x 1.5P	M12 x 1.75P	M12 x 1.75P
C3 <sup>4</sup>	★ ≤11 / ≤12	★ ≤14 / ≤16	≤19 / ≤24	≤32	≤38	≤48	≤55
C4 <sup>4</sup>	30	34	40	50	60	85	116
C5 <sup>4</sup>	30	50	80	110	130	180	200
C6 <sup>4</sup>	3.5	8	4	5	6	6	6
C7 <sup>4</sup>	48	60	90	115	142	190	220
C8 <sup>4</sup>	19.5	19	17	19.5	22.5	29	63
C9 <sup>4</sup>	70	91	101	126	147	191	232
C10 <sup>4</sup>	13.25	13.5	10.75	13	15	20.75	53.5
W	6	8	8	8	12	12	12
X	60	45	45	45	30	30	30
Y	6	10	10	10	10	10	12
Z	60	36	36	36	36	36	30

4. C1~C10 are motor specific dimensions (metric std shown). Refer to Apexdyna.com and design Tool to view your specific motor mounting system.

★ AL070 ratio 4, 9 offers C3 ≤ 12 option . ★ AL095 ratio 4, 9 offers C3 ≤ 16 option .

# AL Series

## Dimensions (2-stage, Ratio $i=10\sim90$ )



[unit: mm]

Dimension	AL070	AL095	AL110	AL150	AL190	AL230	AL280
D1 <sub>H7</sub>	37.5	55.5	70.5	102.5	132.5	168.5	204.5
D2	M3 x 0.5P	M3 x 0.5P	M4 x 0.7P	M5 x 0.8P	M5 x 0.8P	M6 x 1P	M6 x 1P
D3	42	61.5	78.5	110	142.5	179	216
D4 <sub>h7</sub>	47.7	67.3	87.3	118.1	152.8	190	229.2
D5 <sub>h7</sub>	70	95	110	150	190	230	280
D6	80	108	124	164	208	246	296
D7	90	120	135	175	225	262	312
D8	4.5	5.5	5.5	5.5	9	9	9
D10 <sub>H7</sub>	70	62	82	116	145	178	224
L1	3	3	3	3	4	3	3
L2	36	55.5	60.5	79	94	115	116
L3	78.5	97.5	116.5	148	181	219.5	253.5
L4	0.5	0.5	0.5	1	1	1.5	1.5
L5	6	7	10	13	15	18	22
L6	6	7	7.5	10.5	12	15	18
L7	6	6	8	9	9	11	11
L9	2	8	12	14	18	22	26.5
C1 <sup>5</sup>	46	46	70	100	130	165	215
C2 <sup>5</sup>	M4 x 0.7P	M4 x 0.7P	M5 x 0.8P	M6 x 1P	M8 x 1.25P	M10 x 1.5P	M12 x 1.75P
C3 <sup>5</sup>	≤11 / ≤12	≤11 / ≤12	≤14 / ≤15.875 / ≤16	≤19 / ≤24	≤32	≤38	≤48
C4 <sup>5</sup>	30	30	34	40	50	60	85
C5 <sup>5</sup>	30	30	50	80	110	130	180
C6 <sup>5</sup>	3.5	3.5	8	4	5	6	6
C7 <sup>5</sup>	48	48	60	90	115	142	190
C8 <sup>5</sup>	19.5	19.5	19	17	19.5	22.5	29
C9 <sup>5</sup>	98	117	135.5	165	200.5	242	282.5
C10 <sup>5</sup>	13.25	13.25	13.5	10.75	13	15	20.75
W	6	8	8	8	12	12	12
X	60	45	45	45	30	30	30
Y	6	10	10	10	10	10	12
Z	60	36	36	36	36	36	30

5. C1-C10 are motor specific dimensions (metric std shown). Refer to Apexdyna.com and design Tool to view your specific motor mounting system.